

Qualifications for
**At-The-Ready
Consultant Engineering Services
for Municipal Project Manager**

Submitted to
Vermont Agency of Transportation



Table of Contents

SECTION 1: COVER LETTER

SECTION 2: GENERAL FIRM INFORMATION

Introduction to Consultant Firm

Organizational Chart

Availability Chart

SECTION 3: MUNICIPAL PROJECT MANAGEMENT SERVICES

Qualifications and Experience of Firm

Project Examples – Transportation

Key Personnel

SECTION 4: RESUMES

SECTION
1

Cover Letter



Brandon Sidewalk Improvements/Brandon, VT



FUSS & O'NEILL

March 9, 2020

Ms. Nydia Lugo, Technical Development Engineer
Vermont Agency of Transportation
Municipal Assistance Bureau
219 North Main Street
Barre, VT 05641

RE: At-The-Ready Consultant Engineering Services for Municipalities: Municipal Project Manager

Dear Ms. Lugo:

Municipalities across Vermont face challenges with maintaining infrastructure and improving the user experience. These challenges can be attributed to funding issues, manpower, location, or even weather related concerns. With the Vermont Agency of Transportation (VTTrans) having the At-the-Ready contract mechanism, municipalities have a great opportunity to select a qualified consultant without having to administer a traditional procurement process. Having been a trusted project partner with VTTrans for more than 35 years, Fuss & O'Neill has the technical capacity and experience to serve as the Municipal Project Manager (MPM) to Vermont Municipalities.

VTTrans is Fuss & O'Neill's top client, and our firm continues to invest in Vermont, both at a state and local level. We currently hold retainer contracts with VTTrans for Highway, Safety and Design, Structures Engineering, Pavement Management, and At-the-Ready. We have a complete understanding of the VTTrans process, having completed many projects through their Municipal Assistance Bureau (MAB), and we enjoy working on local projects throughout Vermont.

With more than 300 employees across New England, Fuss & O'Neill is a multidisciplinary firm with in-house disciplines that include transportation and roadway design, geotechnical engineering, bridge engineering, stormwater management, landscape architecture, and electrical engineering. Our team will be led by Project Manager Patricia Shedd. Patricia has been exclusively serving VTTrans since she started with the firm in 1998. A Vermont native, Patricia is invested both personally and professionally in the development of the state's built environment, and her commitment to help improve the facilities that serve Vermont is as strong as ever. She will be supported by talented technical professionals from our Vermont and New Hampshire offices that have the knowledge and experience to provide insight to both municipal clients and contractors in an MPM role.

Herein we detail qualifications that make Fuss & O'Neill uniquely qualified to support VTTrans and municipalities throughout Vermont in the At-the-Ready contract. Please contact the undersigned with any questions.

Sincerely,

Patricia Shedd
Program Manager | Project Manager
603.668.8223 x2184
pshedd@fando.com

Philip Forzley, PE
Principal-in-Charge | Vermont Office Manager
802.698.0370 x5235
pforzley@fando.com

205 Billings Farm Road
Suite 6B
White River Junction, VT
05001
802.698.0370

www.fando.com

California
Connecticut
Maine
Massachusetts
New Hampshire
Rhode Island
Vermont

SECTION
2

General Firm Information



SPEED
LIMIT
40

General Firm Information

Fuss & O'Neill is a full-service engineering firm with a depth of staff and experience to complete any project – from initial design to final construction. Headquartered in Manchester, CT, our 300+ person firm has 8 regional offices throughout all 6 New England states. As we grow in size, we maintain our client-first philosophy. We work closely with all stakeholders to give life to a community's vision. Our professional staff maintains licenses and certifications across a wide range of engineering, planning, landscape architecture, design build, scientific, and manufacturing disciplines.

We place great emphasis on collaboration, both within the company and with our clients. We are guided by what is best for the client and the project, identifying project champions, naming project leaders, building project teams, and providing responsive service and quality deliverables. Our mission is to provide our clients with innovative and practical engineering, scientific, and planning solutions. It is what we have been doing since our firm was established in 1924, and what we remain committed to do.

Firm History

Fuss & O'Neill was founded in 1924, and has been practicing engineering for nearly a century. In 2017, Fuss & O'Neill, acquired CLD Consulting Engineers, resulting in a more diverse, dynamic overall firm. Below are former firm names and dates of those incorporations:

Griswold Services, Inc. – 1925 to 1967

Griswold Engineering, Inc. – 1967 to 1971

Griswold & Fuss, Inc. – 1971 to 1977

Fuss & O'Neill, Inc. – 1977 to present

Main Point of Contact

Patricia Shedd

Associate, Highway Team Leader

Fuss & O'Neill, Inc.

50 Commercial Street

Manchester, NH 03101

603.668.8223 x2184

pshedd@fando.com

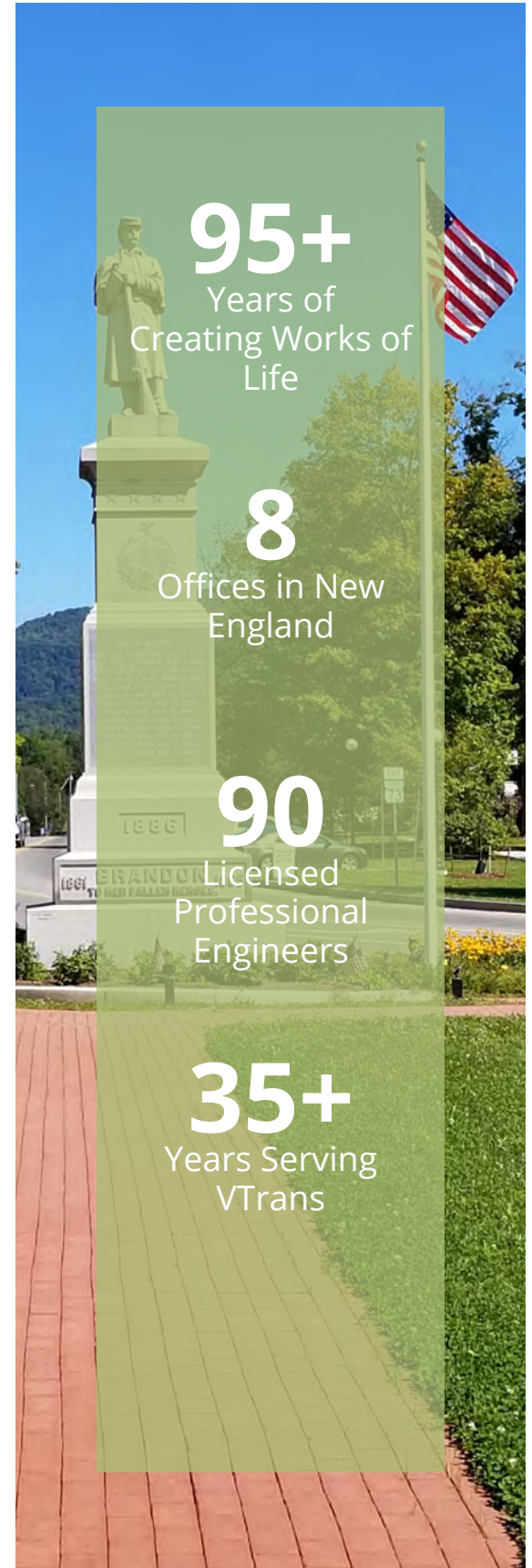


Over the years, Fuss & O'Neill has developed strong working relationships with various local and state transportation officials, and our firm has acquired a solid understanding of their respective standards for roadway design. Our engineers have all become well-versed in VTrans design standards, engineering documents, and specifications. We have worked with municipal personnel on large-scale projects such as the Pittsford-Brandon US Route 7 corridor for more than two decades, and we have worked on smaller projects, such as the Stowe Lower Main Street sidewalk project. No matter the size and scope of the assignment, Fuss & O'Neill will provide qualified personnel, that have been through the VTrans and Municipal Assistance Bureau (MAB) process to deliver the quality, service and technical expertise that your project requires.

VTrans is Fuss & O'Neill's top client across the firm. We have a team solely dedicated to serving VTrans and projects that come through the Municipal Assistance Bureau (MAB). Our team has a great track record in helping municipalities navigate the VTrans process while delivering project solutions that meet the needs of their end-users.

Fuss & O'Neill's specialties include roadway and highway design, intersection and signal design, bicycle and pedestrian facility designs, bridge and culvert design and replacement, and additional transportation and traffic engineering projects. Our team also has extended in-house abilities that encompass right-of-way services, geotechnical engineering, environmental engineering and hazardous materials remediation, landscape architecture, and lighting design – all components that could contribute to Vermont municipal projects.

For the At-the-Ready Municipal Project Management (MPM) contract, Fuss & O'Neill does not intend to utilize any subconsultants.



Approach to Municipal Project Manager Role

Fuss & O'Neill has completed numerous MAB projects that have successfully followed the "Guidebook for Municipally Managed Projects". This book provides valuable information on the process and checklists. Utilizing the Guidebook and our years of experience learning on these projects helps solidify that we understand the process and the clients' desired outcome. The MAB has templates for all of the municipalities' consulting needs to assist in preparing Request for Qualifications and Requests for Proposal documents, of which we are very familiar. For municipalities that do not have this experience, the selection process can be challenging. However, a well written RFQ/RFP that outlines the municipalities' needs is critical to selecting the appropriate design consultant.

As MPM, Fuss & O'Neill would make prioritize expedited reviews to help resolve issues quickly that might otherwise delay a project. We understand that any project delay has the potential to increase the project cost. Closely monitoring the design consultants' activities helps to maintain the project schedule. Regular communication with the municipality and VTrans MAB Project Manager to review progress and discuss design elements facilitates producing a project that meets the community's expectations. All communication and public meetings are documented as either meeting minutes or a memorandum to the file, and is then distributed via email to the team so all parties have the same information and expectations.

Our team routinely conducts property owner meetings, prepares ROW plan, titles and the easement language needed to acquire the rights to construct a project and when necessary provides testimony at the Necessity Hearing. We will also coordinate with utility companies to review the potential impacts to their infrastructure to formulate a solution that is acceptable to all stakeholders.

The Fuss & O'Neill MPM is responsible for overseeing that all contract and permit provisions are met, and that contract plans are submitted on time and on budget. Our Project Managers complete monthly project status updates and invoices for all of our MAB projects, and are knowledgeable on the invoicing requirements, allowable expenses, backup information required, and the required statement attesting that the invoice is complete and accurate.

Fuss & O'Neill has extensive experience preparing bid packages for construction, reviewing the special provisions to ensure all ROW agreements, permit requirements and local/state/federal laws are met. The MAB has an excellent template that we utilize to start putting together the bid package. Our firm is also experienced with advertising for construction, issuing addendums to answer contractors' questions, and preparing the bid analysis to determine the apparent low bidder. We routinely attend the Preconstruction Meetings which is critical to make sure the contractor, resident engineer, municipality personnel, design consultant and the MPM understand the project requirements. This is also a forum for the contractor to ask any questions they may have about the contract documents.



Establishing a Common Approach

Fuss & O'Neill MPMs will attend Preconstruction Meetings to help create open lines of communication.

During construction Fuss & O'Neill will provide oversight of the contractor and construction inspector and attend construction meetings and field reviews as necessary and review daily work reports. Should a Change Order become necessary we will review and recommend for the municipalities approval and email to the VTrans PM for their approval. When construction is substantially complete, Fuss & O'Neill will participate in a walkthrough and prepare a memo with a punch list of items that need to be resolved prior to final acceptance of the project.

Fuss & O'Neill record keeping will include all documentation throughout the life of the project and will be provided to the municipality upon final acceptance of the project. The files will include information necessary should the project be audited.

Areas of Expertise

Roadway Design and Safety Engineering

Through our vast experience working on hundreds of roadway projects throughout New England, our transportation engineers have become well-versed in roadway geometry, drainage, traffic signal design, traffic calming, and context-sensitive design techniques from initial preliminary engineering design stages through the construction support phase. Over the years our firm has developed a strong working relationship VTrans, and have a solid understanding of their respective standards for roadway design. Our highway designers have handled assignments from the largest interstate highway improvements to small local road and intersection geometry.



Signals in Jericho Improve Safety

Fuss & O'Neill designed signals at the intersection of VT 15 and Browns Trace Road in Jericho to meet the traffic and safety needs of the community.

Our engineers have design and field inspection experience with the construction of municipal infrastructure projects, as well as projects funded by various state programs in New Hampshire, Vermont, Maine, Connecticut, Massachusetts, and Rhode Island, allowing us to quickly adapt to the specific project needs of a municipality. Over the years we have developed strong working relationships with various local and state transportation officials and have acquired a solid understanding of their respective standards for roadway design. We evaluate each roadway project in a thorough manner before developing a design to address the needs and concerns of individual communities. We are able to evaluate an existing high-crash location, safety issue, or access management concern and integrate our highway design recommendations with proposed land use and regional transportation improvement strategies. Our roadway safety engineering experience includes designing safety elements such as guardrails, barrier systems, impact attenuators, breakaway sign supports, and other safety devices, as well as special treatments for difficult locations.

Fuss & O'Neill has been providing construction administration and bidding services for state, municipal, and private projects throughout its history. Our construction services include communication with the public, full or part-time project inspection, running construction meetings, and erosion and sediment control inspections. We review and respond to contractor submittals, requests for information, quality control field test reports, and payment requests. We also develop design modifications, review proposal requests and change orders, prepare contract close-out information, and review/assemble record drawings.

Bicycle, Pedestrian Facilities and Rail Trails

Greenways connect communities. They present a break from the solitary and confined methods of traditional travel, creating a shared avenue to the natural environment. At Fuss & O'Neill, we combine our firsthand knowledge of regional trail networks with our decades of local site/civil engineering experience to develop greenways and rail trails, transforming underused space into safe and traversable destinations.

Fuss & O'Neill has planned, designed, and permitted some of the most progressive transportation solutions in the Northeast, while always adhering to state and environmental regulations. We design with the user in mind – creating suitable spaces for cyclists, walkers, runners, and those with special needs.

Each greenway, while often providing connectivity to a larger system, has its own identity. Each must pair, aesthetically, with its natural surroundings. Our engineers and planners design with this compatibility in mind – looking for reuse and refurbishment opportunities and using natural, local, and sustainable materials whenever possible. With nature guiding our design path, the result is a natural fit.

Bridge and Culvert Engineering

Fuss & O'Neill provides bridge engineering services to municipalities, state agencies, architects, industrial, and private clients for vehicular, pedestrian, and railroad bridge projects. Projects range from inspection and evaluation of existing structures to the design of bridge repairs, rehabilitations, replacements, and new structures.

Utilizing a variety of construction materials, we pride ourselves on designing bridges, arches, and culverts that complement their surroundings while meeting the needs of our clients and community residents. Because of our extensive experience in this field, we are able to develop innovative, cost-effective solutions that minimize visual and physical impacts to the surroundings and achieve project goals. Our expertise includes repairs to concrete and steel bridge elements, rehabilitation of historic structures, single and multiple span bridges over waterways, roadways, interstate highways, and railroads, as well as a variety of steel trusses, stone and masonry arches, precast concrete boxes/arches/frames, timber, steel and pre-stressed concrete girders. We regularly incorporate staged construction techniques into our designs to maintain traffic during construction. We also perform type studies and load ratings and design temporary shorings and supports for construction activities.

As a multidiscipline engineering firm, we have the ability to coordinate survey, geotechnical engineering, utilities, wetlands, hydrologic/hydraulic engineering, roadway design, maintenance and protection of traffic, permitting, property impacts, and public outreach activities in order to develop designs and repairs that protect the environmental integrity of the location and bring the project to a successful conclusion.



Route 127 Recreation Path Restoration

Fuss & O'Neill repaired and replaced an eight foot wide section of the recreation path that suffered slope failure. The project involved removal of the failed pavement and subbase, and replacement and restoration in-kind with extruded polystyrene block as lightweight backfill.

Public Outreach and Participation

All of our projects require client engagement at various levels, and oftentimes community outreach on behalf of our clients. Our professionals are skilled facilitators and sensitive to our clients' concerns.

We focus on clear communication and collaboration throughout the project and have extensive experience in scheduling meetings, preparing presentations, meeting agendas, and reports, as well as making presentations that facilitate understanding and consensus. We also have significant experience organizing and facilitating charrettes and workshops. We have participated in numerous stakeholder, public information, and Planning and Zoning meetings for corridor planning studies, parking studies, traffic calming projects and land use applications for private development projects. We excel at collaboration between private business and public agencies. We understand the importance of sharing study objectives with the public, soliciting valuable input on their concerns, and building consensus in order to develop preferred alternatives.

Our professionals live and work in the communities we serve. They understand the local conditions and challenges these communities face and are personally vested in developing cost-effective, long-term solutions that add value to the community. Because of their keen understanding of the ramifications to the community, they can easily identify key points that resonate with their audience and are very successful in obtaining public consensus.

Municipal Plan Reviews and RFP/RFQ Preparation

Fuss & O'Neill provides plan review services for Planning Boards for municipalities. We have extensive experience in applying not only a municipality's Regulations and Ordinances to the application under review, but also State and Federal regulatory provisions, permitting requirements, and generally-accepted engineering standards. Fuss & O'Neill has provided all levels of construction inspection services associated with Planning Board peer-reviewed and approved projects, as well as large-scale public works construction projects with water, sewer, drainage, and roadway construction elements using public and/or private funding sources. We have provided resident engineering services for multiple sidewalk construction projects where adherence to ADA requirements was critical to the completion and acceptance of the project. We have performed plan review services to many municipalities across New Hampshire, including Hudson, Merrimack, Plaistow, Goffstown and Chichester.

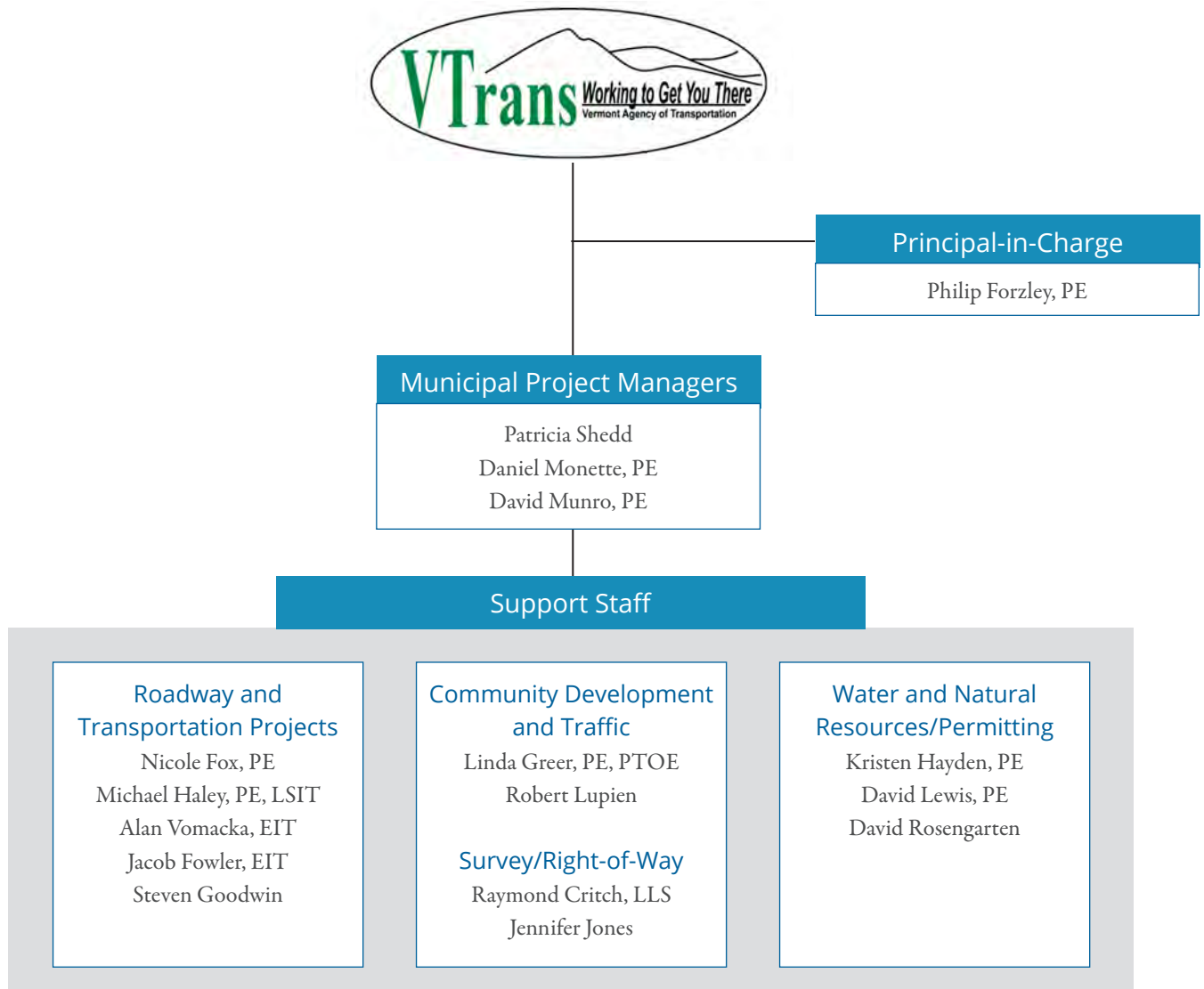
Additionally, our team is able to assist municipalities with RFP/RFQ Preparation, as we recently did in Newmarket, NH. Having a consultant help with RFP/RFQ documentation helps achieve clear requirements and processes.



Public Involvement and Early Coordination

Keeping the public and other key stakeholders involved early in project development creates buy-in and understanding, and a smoother project process. For a Sidewalk Study in Stowe, VT – a VTrans MAB project – our team presented at three public meetings to communicate the Town's goal of a safe and comfortable passage for pedestrians through the sidewalk network that extends through Stowe.

Organizational Chart – Municipal Project Management



Availability Chart – MPM Services

The following is an availability chart for the VTrans At-The-Ready Contract. Our team is dedicated to providing exceptional service and technical expertise on VTrans MAB projects, and will dedicate the appropriate resources to exceed project requirements. The proposed Municipal Project Managers will oversee and manage assignments, drawing from technical experts shown below. Additional personnel, identified on the organizational chart, will be utilized if they are needed to manage and execute assignments.

Name	Role	Availability
Philip Forzley, PE	Principal-in-Charge	5%
Patricia Shedd	Municipal Project Manager	50%
Daniel Monette, PE	Municipal Project Manager	50%
David Munro, PE	Municipal Project Manager	50%
Nicole Fox, PE	Roadway Design and Transportation	10%
Michael Haley, PE, LSIT	Roadway Design and Transportation	10%
Linda Greer, PE, PTOE	Community Development and Traffic	10%
Raymond Critch, LLS	Survey/Right-of-Way	10%
Kristen Hayden, PE	Water and Natrual Resource/Permitting	10%
David Lewis, PE	Water and Natrual Resource/Permitting	10%

SECTION
3

Municipal Project Management Services

US Route 5 and Red Village Road Intersection Improvements/Lyndon, VT

Section 3: Municipal Project Management (MPM) Services

1. Qualifications and Experience of Firm

Fuss & O'Neill has been providing roadway design services for state, Federal, municipal, and private sector clients throughout New England for decades. Our most recent experience has involved a wide variety of projects for VTrans, NHDOT, MaineDOT, MassDOT, ConnDOT, RIDOT, U.S. Forest Service, municipalities and private clients. Projects have included full reconstruction of roadways in urban villages to reclaim projects along Vermont State Routes, large and small box culvert replacements, signalizing intersections, signing projects, and large and small bridge replacements. Because we work with a variety of clients, we are able to see a variety of processes used by these clients. Our Highway Team is diligent about sharing information on our project experiences with the goal of continually looking at ways to improve our service. Additionally, our team has been working with VTrans for more than 35 years, giving us a strong understanding of the Agency's processes, procedures, and expectations on projects. We work on projects through the Municipal Assistance Bureau (MAB), as we work in conjunction with Town personnel and VTrans staff to deliver high-quality design solutions on projects across Vermont.

Our team always seeks the best for our clients, whether we are in the role of a municipal project manager, resident engineer, or design consultant. Having worked in Vermont for VTrans and municipalities throughout the state, we have an in-depth understand the relationship between all parties for a successful contract. Fuss & O'Neill can draw on these project experiences to help streamline the project process, serving as an advisor to the Town, a technical resource to the contractor, and an information source to the public.

The advantage of the Fuss & O'Neill team lies within the depth of resources and our specific experience working for VTrans and executing projects through the MAB process. Many of the tasks outlined as responsibilities for the Municipal Project Manager (MPM) are tasks we often make part of our process as the design consultant. We work with utility companies and local officials on coordination of permits, utilities and right-of-way. We have helped municipalities as a third party plan reviewer, and have helped prepare RFP/RFQ documents to help with their procurement process. Our team coordinates with property owners when applicable, informing them of project impacts. Fuss & O'Neill is well-suited and positioned to take on this role as an MPM through the At-the-Ready contract.

2. Relevant Project Examples

Fuss & O'Neill has extensive internal design and engineering capabilities, and collectively we have a thorough knowledge of the VTrans process. We work with municipalities across the state on projects that help improve and preserve critical infrastructure. On subsequent pages, you will find brief examples of project experience that includes a summary of our experience, and client contact information.

US Route 7, Segment 6 Roadway Reconstruction

Brandon, VT

Fuss & O'Neill provided the conceptual, preliminary, right-of-way, and final design of this one-mile-long complex urban VTrans Municipal Assistance Bureau (MAB) project. We worked with the Town and local groups to incorporate input in order to best meet the community's needs.



This project included the complete roadway design including streetscape, landscape design, development of traffic control plans, design of a comprehensive closed drainage system, replacement of sewer and water systems, utility relocations, permitting, and the development of contract plans and specifications. We designed the temporary traffic control plans to accommodate two lanes of traffic during construction to minimize the impacts to existing landscape features and to maintain the overall feel of the downtown area during construction. During construction, we responded to contractors' request for information and design assistance for unforeseen circumstances such as a deteriorating bridge deck. Our team has worked on all six segments of the Pittsford-Brandon corridor over the last 20+ years.

Client Contact: David Atherton, Town Manager, Town of Brandon, VT, 802-247-3635, datherton@townofbrandon.com



Williston Road Cycle Track and Sidewalks

South Burlington, VT

The City of South Burlington has been working towards creating a City Center District with an efficient transportation network that supports pedestrians, cyclists, and public transportation while accommodating automobiles.

Fuss & O'Neill has collaborated with the City to design a two-way paved cycle track, a four foot wide landscaped area, and a six foot wide concrete sidewalk. The section of Williston Road between Dorset Street and Midas Drive is a small portion of the City Center vision. However, there is a significant amount of vehicular traffic and narrow shoulders that make this section of road undesirable for many bicyclists. The cycle track, sidewalks, lighting, and landscaping improvements will increase the attractiveness of the area from a "typical" city street to a multimodal environment that can accommodate various types of users.

Client Contact: Jonathan Kaplan, PE, VTrans, 802-498-4742, jon.kaplan@vermont.gov

VT Route 100 Sidewalk Improvements

Stowe, VT

For this VTrans MAB project, Fuss & O'Neill provided the design for 1,200 feet of sidewalk on Lower Main Street (Route 100).



The design included the realignment of River Road, the connection of the recreation path to the sidewalk, access management, and aerial utility relocation. Drainage improvements were designed to avoid impacts to the Town's water and sewer connections and minimized impacts to the adjacent properties. Fuss & O'Neill also provided technical support at public meetings, developed the right-of-way plans, contract plans, cost estimates, bid documents, and construction administration.

Client Contact: Harry Shepard, PE, Public Works Director, Town of Stowe, VT

802-253-8770, hshepard@townofstovermont.org



VT113 Pedestrian Pathway Construction Inspection

Thetford, VT

Fuss & O'Neill provided construction inspection services to the Town of Thetford along VT Route 113. This project was developed through the VTrans MAB program and was managed locally.

The end goal of this project was to construct trailhead parking at the Thetford Elementary School, and extend the trail along VT113 through the school parcel and extending to the library. On this project, construction included a new aggregate surface pedestrian path, construction of curbing, crosswalks, detectable warning surfaces, landscaping and a pedestrian bridge. Fuss & O'Neill had a resident engineer on-site daily to review construction activities and to coordinate with contractors, utility companies, and the general public. We worked closely with the Town, VTrans and the Two Rivers-Ottawaquechee Regional Commission to deliver this project.

Client Contact: Rita Seto, Two Rivers-Ottawaquechee Regional Commission, 802-457-3188, rseto@trorc.org

3. Key Personnel Overview

Every project we work on requires a team effort. For this VTrans Municipal Project Manager contract, we have assembled professionals that understand your development process and project goals, and are ready to work with you to develop comprehensive solutions. Resumes for all key personnel follow.



Philip Forzley, PE
Principal-in-Charge

Phil is the White River Junction, Vermont Office Manager, a Vice President at Fuss & O'Neill, and will serve as Principal-in-Charge for this contract. Phil has more than 35 years of consulting experience, and will allocate the appropriate technical resources for every assignment of this contract.



Patricia Shedd

Municipal Project Manager

Patricia will serve as Program Manager for this contract. When a task order is assigned, Patricia will work with VTrans to understand its requirements to ensure that the right personnel work on the project. Patricia has been working exclusively for VTrans since 1998, and nobody has a better understanding of the VTrans process.



Daniel Monette, PE

Municipal Project Manager

Daniel is a civil engineer based in our White River Junction office. Having worked with many public clients, Dan has strong knowledge in municipal infrastructure, utility design, environmental engineering, site design, roadway design, heavy civil construction projects, and land use permitting. He will serve as a Municipal Project Manager.



David Munro, PE

QA/QC and Project Manager

Dave has been a tremendous asset on VTrans projects, and will serve as a Municipal Project Manager for this contract. He will work to deliver the highest level of quality and constructability on every project. Dave has been working exclusively for VTrans since 1997, and has an exacting understanding of the VTrans process.



Nicole Fox, PE
Roadway Design and
Transportation

A transportation engineer with 20 years of relevant experience, Nicole will provide roadway design and transportation insight and support on VTrans MAB projects. Her specialty is bicycle, pedestrian and trail projects, as she managed the Delaware and Hudson Rail Trail project in Southwestern Vermont.



Michael Haley, PE, LSIT
Roadway Design and
Transportation

Mike is a familiar face to VTrans, as he is an important member of our team. Well-versed in all aspects of roadway design, Mike is an invaluable resource for his ability to shift gears and solve problems on any assignment. A conscientious designer, Mike works with VTrans staff to solutions to any problem.



Linda Greer, PE, PTOE
Community Development and
Traffic

Originally a roadway engineer, Linda collaborates with clients and Fuss & O'Neill's transportation and community development teams to implement traffic control plans that work. Linda led the traffic planning and design for complex traffic control designs in Royalton and Berlin.



Raymond Critch, LLS
Survey/Right-of-Way

Raymond brings over 30 years of experience as a Licensed Land Surveyor to Fuss & O'Neill's White River Junction, Vermont office. Raymond is responsible for estimating, quality control, procedural adherence, and scheduling, as well as performing and overseeing all aspects of survey and septic system design.



Kristen Hayden, PE
Water and Natural Resources/
Permitting

Kristen has a extensive experience designing stormwater and roadway projects throughout New England. She has worked with State Departments of Transportation, including having helped the Rhode Island DOT develop their Stormwater Manual. She completed stormwater design for projects in Lyndon and South Burlington.



David Lewis, PE
Water and Natural Resources/
Permitting

Dave is an expert in water and sewer design and construction inspection, with more than 30 years of field experience. He brings practical experience to every design. Dave coordinates with utility companies and contractors to ensure that designs are implemented properly. He recently designed the reconfiguration of a gravity sewer on VT Route 131 in Cavendish.

Resumes



VT Route 114 over Dish Mill Brook/Burke, VT



Philip Forzley, PE

Principal-in-Charge | Vice President | Office Manager

“As far as engineers go, I’m a serious people person. I love learning about clients’ needs, figuring out the best path to the solution, putting a team together, and executing the work to fulfill that need.”

PForzley@fando.com

800.286.2469 x5235

EDUCATION

BS, Biology - 1981
University of Connecticut
BS, Civil Engineering - 1984
University of Connecticut
MS, Civil Engineering - 1997
University of Connecticut

LICENSES & REGISTRATIONS

Professional Engineer NH
Professional Engineer MA
Professional Engineer CT
Professional Engineer VT

PROFESSIONAL AFFILIATIONS

Assoc of State Floodplain Mgrs
New England Water Env Assoc
Water Environment Federation
American Society of Civil Engineers

EXPERIENCE

15 years with Fuss & O'Neill
36 years Professional Experience

Phil manages design teams and actively participates in project design. He has completed a variety of civil and environmental engineering projects that include dam engineering, hydrology and hydraulics, site planning and engineering, stormwater management, wastewater treatment and disposal, construction services, and regulatory compliance. He provides services to local and state government entities, public and private school systems and universities, industries, and land developers.

Phil’s primary strength is management of projects that involve multiple disciplines, and he frequently coordinates design services with architects, construction managers, and other project team members.

REPRESENTATIVE PROJECTS:

CT DEEP Multidisciplinary On-Call Engineering Services, Various Locations, CT

MADCR Conservation and Recreation On-Call Engineering Services, Various Locations, MA

Quality Assurance and Inspection Services, Reservoir Dam, Walpole, NH

Emergency Inspection Services, Mill Pond Dam, Walpole, NH

Filley Park Pond Renovation, Town of Bloomfield, CT

Drainage and Flooding Review of Private Properties, Various Towns and Cities in CT

Third-party Review Services for the Town of Watertown Inland Wetlands Agency and Planning and Zoning Commission, Watertown, CT

Flood Mitigation Design Projects, City of Milford, CT



Patricia Shedd

Municipal Project Manager

“I engineer a cost effective solution to improve the safety and mobility in the community regardless of the mode of transportation. I also volunteer with Engineers Without Borders to bring clean and plentiful water supply to villages. Whether it’s local or thousands of miles away, there is no better feeling than being part of a team that has improved the lives of others.”

pshedd@fando.com

800.286.2469 x2184

EDUCATION

AS, Civil Engineering Technologies
- 1986
Vermont Technical College

PROFESSIONAL AFFILIATIONS

Women in Transportation
Seminar (WTS)
ACEC - VT
Engineers Without Borders - NH
Professional. Chapter

EXPERIENCE

22 years with Fuss & O'Neill
34 years Professional Experience

Patricia is the Highway Team Lead and Senior Project Manager in our Manchester, NH office. and has been involved in a diverse range of traffic and transportation projects as well as survey and civil/site designs. She is responsible for the project planning, scheduling, client coordination, subconsultant coordination, and project overview for a variety of VTrans projects. Patricia has developed close working relationships with personnel in VTrans’ Highway, Safety & Design, Municipal Assistance Bureau, Pavement Management and Right-of-Way Sections.

Patricia has worked on all aspects of roadway design including horizontal geometry, vertical alignments, guardrail, superelevation, drainage, signing, pavement markings, EPSC plans, temporary traffic control plans, developing Right-of-Way plans, developing cost estimates and obtaining stormwater discharge permits. She has been involved in meetings with Selectboards, Public 502 Hearings, the Act 250 process, and Necessity Hearings.

REPRESENTATIVE PROJECTS:

Williston Road Cycle Track and Sidewalk Project, City of South Burlington, VT

Kennedy Drive Stormwater Pond 7, City of South Burlington, VT

VT Route 100 Sidewalk Project, Stowe, VT

US Route 7 Improvements, VTrans, Pittsford (Segment 2)

South Street Improvements, South Hero, VT

VT Route 15 Intersection Improvements, VTrans, Jericho, VT

US Route 5 Full Depth Reconstruction, VTrans, Lyndon, VT

US Route 2/VT Route 314 Intersection, VTrans, South Hero, VT

VT Route 14 Culvert Replacement, VTrans, Barre Town, VT

Roaring Brook Road Culvert Replacement, VTrans, Barton, VT



Daniel Monette, PE

Municipal Project Manager

“Civil Engineering is a noble profession, requiring ingenuity and creativity to produce something beneficial to society. Science and mathematics are required to answer complex questions; however, on-site, real world experience teaches us to be practical in our designs.”

dmonette@fando.com

800.286.2469 x2215

EDUCATION

BS, Civil Engineering - 2008
University of Vermont

LICENSES & REGISTRATIONS

Professional Engineer MA
Septic Designer NH
Septic Designer VT
Professional Engineer NH
Professional Engineer VT

PROFESSIONAL AFFILIATIONS

American Society of Civil
Engineers

EXPERIENCE

5 years with Fuss & O'Neill
11 years Professional Experience

Daniel is a project engineer and designer for Fuss & O'Neill's White River Junction, Vermont office. He has invaluable construction engineering and field experience on widespread projects throughout New England. This experience, combined with technical design skills, enables him to prepare complicated utility and site design plans for a diverse range of projects. In addition, Daniel has expertise in the development of permitting packages and bid documents for submittal to federal, state, and local regulatory agencies. These efforts have led him to develop a strong working knowledge in municipal infrastructure, utility design, environmental engineering, civil/site design, roadway design, heavy civil construction projects, and land use permitting.

REPRESENTATIVE PROJECTS:

Parking Design and Permitting, Glen Ellis Day-Use Recreational Scenic Area and Parking, White Mountain National Forest Service, Jackson, NH

Design and Permitting, Goose Pond Road Reconstruction, Lyme, NH

Feasibility and Roadway Relocation Design, River Road Settlement Analysis, Lyme, Lyme, NH

Survey Design, Bowen Brook Timber Sale, USDA Forest Service, Benton, NH

Cheney Street Sidewalk Design, Newport, NH

Sidewalk Design, School Street & Beech Street, Newport, NH

Roadway Design, Indigo/Tunnel Stream Timber Harvest Specified Road Construction Project, USDA White Mountain National Forest Service, Benton, NH

Brookside Drive Culvert Replacement, New London, NH

Ray School Site Design, Parking Areas, Site Walkways, Site Access, Site Utilities and Drainage, Hanover SAU70, Hanover, NH



David Munro, PE

Municipal Project Manager

“It is such a rewarding experience to see my ideas on paper constructed in the real world and in knowing that I have helped to solve a problem and, ultimately, improved public safety, accessibility, and the everyday travel experience.”

dmunro@fando.com

800.286.2469 x2189

EDUCATION

BS, Civil Engineering - 1994
University of Vermont

LICENSES & REGISTRATIONS

Professional Engineer VT
Professional Engineer NH

PROFESSIONAL AFFILIATIONS

NH Society of Professional
Engineers

EXPERIENCE

22 years with Fuss & O'Neill
25 years Professional Experience

David is a Senior Transportation Engineer and has extensive knowledge of AASHTO and state-specific design standards and is responsible for ensuring quality submittals. He does this by providing continual design guidance and support to the project engineers working on highway design projects and by thorough review of plans and documents before submittal.

Dave possesses exceptional MicroStation and InRoads skills and is directly responsible for maintaining and enforcing CAD standards. Dave has worked on all aspects of roadway design including scoping, horizontal geometry, vertical alignments, superelevation, pavement design, drainage, stormwater treatment, utility coordination, guardrail layout, right-of-way plans, pavement marking, and signing. His responsibilities have encompassed all aspects of the design and production of highway plans including typical sections, plans, profiles, cross sections, quantity take-offs, cost estimating and contract documents.

REPRESENTATIVE PROJECTS:

- US Route 7 Improvements Scoping Project, VTTrans, Pittsford-Brandon, (Segments 1-6) VT
- US Route 7 Improvements, VTTrans, Pittsford-Brandon (Segment 5), VT
- US Route 7 Improvements, Brandon (Segment 6), VT
- VT Route 15 Intersection Improvements, VTTrans, Jericho, VT
- VT Route 108 Drainage Improvements, VTTrans, Bakersfield, VT
- South Street Improvements, South Hero, VT
- VT Route 100 Sidewalk Project, Stowe, VT
- VT Route 14 Box Culvert Replacement, VTTrans, Barre Town, VT
- I-91/I-93 Safety Improvement Projects, VTTrans, Various Locations, VT
- US Route 7 Bridge No. 114 Repairs, Town of Brandon, VT



Nicole Fox, PE

Roadway Design and Transportation

“My focus in transportation engineering is to use creative solutions to improve safety and mobility for all modes of travel. I enjoy solving puzzles and working out the best design solutions for challenging situations. I see what we do as a way to serve our communities while fulfilling client needs.”

nfox@fando.com

800.286.2469 x2121

EDUCATION

BS, Civil Engineering - 1999
University of Florida

LICENSES & REGISTRATIONS

Professional Engineer ME
Professional Engineer NH
Professional Engineer VA
Professional Engineer VT

PROFESSIONAL AFFILIATIONS

Women in Transportation
Seminar (WTS)

EXPERIENCE

11 years with Fuss & O'Neill
21 years Professional Experience

Nicole is a Senior Transportation Engineer with experience in all phases of transportation design and planning. Her practice includes roadway, intersection, pedestrian, and bicycle facility design, crash analyses, corridor studies, and traffic control plans.

Nicole is a skilled listener and excels at fostering open communication between clients, agencies, and other consultants. As a good communicator and team leader, she has excellent project management skills and experience managing municipal and state projects .

REPRESENTATIVE PROJECTS:

Delaware & Hudson Rail Trail Resurfacing,
Southwestern VT

VT Route 100 Sidewalk Design, Stowe, VT

Feasibility and Scoping Study, Stowe, VT

South Street Improvements, South Hero, VT

ME Routes 26/11 Intersection Improvements,
MaineDOT, Mechanic Falls/Poland, ME

Roadway Design for Goffs Falls Road Bridge
Replacement, Manchester, NH

Brock Street Reconstruction, Rochester, NH

Roadway Approach Design for South New Boston
Road over South Branch Piscataquog River Bridge
Replacement, Frankestown, NH

Roadway Engineering, I-93 Exit 4A Environmental
Impact Statement (EIS), Londonderry and Derry, NH



Michael Haley, PE, LSIT

Roadway Design and Transportation

“I’ve always been interested in the how and why of things; How does this work? Why does it work? Why does it *not* work? Is there a more efficient way to make it work better? Being an engineer lets me ask those questions. The process of developing solutions is fun and it is very satisfying to be able to solve those questions over the life of a project.”

mhaley@fando.com

800.286.2469 x2156

EDUCATION

BS, Civil Engineering - 2002
Clarkson University

MS, Civil Engineering - 2006
California State Polytechnic Univ.,
Pomona

LICENSES & REGISTRATIONS

Professional Engineer VT
Professional Engineer NH
Professional Engineer CA
Land Surveyor in Training NH

PROFESSIONAL AFFILIATIONS

National Society of Professional
Engineers
NH Society of Professional
Engineers

EXPERIENCE

12 years with Fuss & O'Neill
17 years Professional Experience

Mike is a Transportation Engineer with more than seventeen years of experience designing a variety of highway and site development projects ranging from paving and overlay to full depth reconstruction to curb and sidewalk projects. His primary area of expertise is in the development of 3D roadway design models, but he is well versed in all aspects of roadway design. Mike’s career path has taken him from New York to California and finally to New England where his focus is now on Vermont highway design projects. He has served as a resident engineer on a number of construction projects which has further enhanced his design skills. Mike is known for being a reliable problem solver who has a commitment to producing quality designs for clients.

REPRESENTATIVE PROJECTS:

Williston Road Cycle Track and Sidewalk Project, City of South Burlington, VT

Culvert Replacement, VTrans, Lunenburg, VT

VT Route 100 (Lower Main Street) Sidewalk Project, Stowe, VT

US 7 Roadway Improvements, Brandon (Segment 2), VTrans, Pittsford, VT

US 7 Roadway Improvements, Brandon (Segment 3), Pittsford, VT

US 7 Roadway Improvements, Brandon (Segment 4), Pittsford-Brandon, VT

US 2/VT 314 Intersection Safety Improvement Project, VTrans, South Hero, VT

South Street Improvements, South Hero, VT

US Route 5 Roadway Reconstruction, VTrans, Lyndon, VT



Linda Greer, PE, PTOE

Community Development and Traffic

“Family summer vacations meant driving to Ohio to visit my grandmother, each time changing the route for different points of interest. Going from rural highways to metropolitan cities, I realized how roadways changed with traffic demand. Fascinated by traffic moving through the intertwining interstate junctions led me to a career that combines traffic and roadway design, always working to achieve roadway infrastructure to meet society’s changing needs.”

lgreer@fando.com

800.286.2469 x2182

EDUCATION

BS, Civil Engineering - 1997
North Carolina State University

LICENSES & REGISTRATIONS

NHDOT LPA Labor Comp
Professional Traffic Operations
Engineer
Professional Engineer ME
Professional Engineer NH

PROFESSIONAL AFFILIATIONS

American Public Works Assoc
Inst Transportation Engineers
ACEC - NH
ACEC - ME

EXPERIENCE

5 years with Fuss & O'Neill
22 years Professional Experience

Linda leads Fuss & O'Neill's Traffic Team based in the Manchester, NH office. She has extensive experience working collaboratively with State Departments of Transportation, taking projects from conceptual design through final construction plans. She also has a history of successfully delivering projects with timeline constraints to meet funding or construction schedules. The foundation of Linda's career as a Roadway Engineer was built by combining traffic analysis with construction field experience. Linda's specialty is her ability to develop comprehensive traffic control and maintenance plans on complex roadway, highway and bridge projects.

REPRESENTATIVE PROJECTS:

Traffic Management, I-89, Exit 3, VTTrans, Royalton, VT
Traffic Management, I-89, Exit 7, VTTrans, Berlin, VT
Lyndon Intersection Improvement, VTTrans, Lyndon, VT
North-South Road Roundabout Design, OVP Management, North Conway, NH
Route 1 Sidewalk Design, Camden-Rockport, ME
Route 236 and Vine Street Intersection Reconstruction, South Berwick, ME
Route 125 and Massachusetts Ave. Intersection Improvements, MassDOT, North Andover, MA
Route 125 Reconstruction/Rehabilitation, MaineDOT, Lisbon, ME
Route 4 Reconstruction, Strong, ME
Traffic Control Plan, Route 4/5/202 (Bartlett's Bridge Road) over Bartlett's Brook, Lyman, ME
Route 26/Route 121 Intersection Realignment, Oxford, ME



Raymond Critch, LLS

Survey/Right-of-Way

“As a Land Surveyor I enjoy the opportunity to combine an interest in history and mathematics to solve the issues that arise in performing our daily tasks, as well as the variety of working in different environments, from the backwoods to the city streets and in the office.”

rcritch@fando.com

800.286.2469 x2401

EDUCATION

Certificate, Land Surveying -
University of Massachusetts at
Lowell

LICENSES & REGISTRATIONS

Land Surveyor NH

PROFESSIONAL AFFILIATIONS

NH Land Surveyors Association
National Society of Professional
Surveyors

EXPERIENCE

4 years with Fuss & O'Neill
32 years Professional Experience

Raymond brings over 30 years of experience as a Licensed Land Surveyor to Fuss & O'Neill's White River Junction, Vermont office. Raymond is responsible for estimating, quality control, procedural adherence, and scheduling, as well as performing and overseeing all aspects of survey and septic system design. Prior to joining Fuss & O'Neill, Raymond established his survey firm and worked for engineering and surveying firms focusing primarily on large scale residential subdivisions.

REPRESENTATIVE PROJECTS:

- Survey Services, Indigo Sales Road, USDA Forest Service, Benton, NH
- Sherrill Boundary Survey, Nielsen Lane, Sunapee, NH
- Survey Services, Mount Sunapee Resort, Sunapee, NH
- Survey Services, South Main Street and Bay Road Utility Improvements, Newmarket, NH
- Research and Boundary Survey, Sanborn and Walker Subdivision, Twist Hill Road Wilmot, NH
- North Woodlands Boundary Survey, Mountain Road, Newbury, NH
- Topographic Survey, Pinneo Hill Subdivision, Pinneo Hill Road Hanover, NH
- Ronald Ferris Boundary & Existing Conditions Survey, Grace Hill Road and Maple Way, Newbury, NH



Kristen Hayden, PE

Water and Natural Resources/Permitting

“My job allows me to combine my love of math and the great outdoors, which ensures that each roadway I design harmonizes both of these elements without compromise.”

khayden@fando.com

800.286.2469 x2162

EDUCATION

BS, Civil Engineering - 2002
University of Vermont

LICENSES & REGISTRATIONS

NHDOT LPA Labor Comp NH
Professional Engineer NH
Professional Engineer VT

EXPERIENCE

7 years with Fuss & O'Neill
18 years Professional Experience

Kristen supervises and develops roadway and drainage designs for several large-scale highway projects. She has extensive experience in stormwater and roadway design for municipal and state projects and has an understanding of stormwater regulations in New England, while being proficient in MicroStation and InRoads.

Kristen has led design teams on projects utilizing her fully developed understanding of plan development combined with her technical background and practical experience she makes sound engineering decisions. She also has extensive experience in several states and multiple civil engineering disciplines and has participated in and guided projects from conceptual inception through contract plans.

REPRESENTATIVE PROJECTS:

Stormwater Management, Williston Road Cycle Track and Sidewalk Project, City of South Burlington, VT

Stormwater Management and Permitting, Kennedy Drive Stormwater Pond 7, City of South Burlington, VT

Linear Stormwater Manual, RIDOT, Statewide, RI

VT Route 15 at Browns Trace Intersection Improvements, VTrans, Jericho, VT

Drainage System Design, US Route 5, VTrans, Lyndon, VT

VT Route 15/VT Route 15A Intersection Improvements, VTrans, Morristown, VT

US Route 5 Roadway Reconstruction, VTrans, Putney, VT

Closed Drainage System Design, Route 16/27 Rehabilitation, MaineDOT, Kingfield, ME

Route 125 and Massachusetts Ave. Intersection Improvements, MassDOT, North Andover, MA



David Lewis, PE

Water and Natural Resources/Permitting

“Evaluating existing infrastructure for updated use is interesting since it often sheds light on how original designers and builders approached the initial problem. Now with the availability of improved materials, along with advances in design practice, allow us to offer different solutions for the current project.”

dlewis@fando.com

800.286.2469 x2139

EDUCATION

BS, Forest Resource Engineering
 - 1988, State University of New York Col- Environment
 ME, Construction Management
 - 1999, State University of New York Col.-Buffalo

LICENSES & REGISTRATIONS

NHDOT LPA Labor Comp NH
 Professional Engineer NH
 Professional Engineer ME

EXPERIENCE

21 years with Fuss & O'Neill
 31 years Professional Experience

David has decades of experience providing municipal, civil, and geotechnical engineering services for both public infrastructure and private development projects. Design and permitting work has included rural and urban roadway design, solid and industrial waste landfills, sewers, and pump stations. He has provided field consultation to owners, designers, and construction managers during both design and construction phases.

REPRESENTATIVE PROJECTS:

Sewer Design, VT Route 131 Sewer Reconfiguration, Cavendish, VT

Water and Sewer Design, US Route 7 Bridge over Furnace Brook, Pittsford, VT

Brandon Segment 6 Water and Sewer Replacement, VTTrans, Town of Brandon, and Brandon Fire District No. 1, Brandon, VT

Route 125 and Massachusetts Avenue Utility Reconstruction, North Andover, MA

Water Main Relocation, McClelland Farm Road Bridge Replacement, MassDOT, Deerfield, MA

Water Main Replacement, Route 183 (Park Street) over Housatonic River Bridge Replacement, Great Barrington, MA

Resident Engineering, Granite Street Reconstruction, Manchester, NH

Central Square Sidewalk Reconstruction, Safe Routes to School, NHDOT and Town of Troy, NH



205 Billings Farm Road
White River Junction, VT 05001

800.286.2469
www.fando.com